



昌勛股份有限公司
Dr. POWER CORPORATION

昌勛股份有限公司
Dr. POWER CORPORATION

零件規格書/承認書
SPECIFICATION FOR APPROVAL

CUSTOMER : _____

DESCRIPTION : _____ CHARGER _____

MODEL : _____ JW202W2 _____

CUSTOMER PART NO : _____

APPROVED SIGNATURES

--	--	--	--

Rev	Date	Description	Designed	Checked	Approved
A	2019/7/1	Release		Kevin	

臺北市北投區吉利街 131 號 3 樓

3F, NO. 131, JILI ST., PEITOU, TAIPEI, TAIWAN, R.O.C.

TEL : 886-2-2820-7419 · FAX : 886-2-2827-0348

1.Scope

This specification is a charger only for DR202 series product lithium-ion battery pack.

2.Application

Lithium-ion battery packs / 3 slots.

3.Specification

No.	Item	Specification	Remark
1	Support Battery Cells	3S	
2	Charge Voltage	$12.6 \pm 0.3V$	
H	Charge Current	$4.7 \pm 0.6A$	
I	Charge Current Termination	$250 \pm 50mA$	
Í	Recharger Voltage	$\leq 12.3 \pm 0.1V$	
Î	Pre-charge Voltage	$\leq 9.28 \pm 0.2V$	
Ï	Pre-charge Current	$250 \pm 10mA$	
8	Input voltage range	5~16V	
9	Operating Temperature	0~45°C	

4. Safety Protection

No.	Item	Specification	Remark
1	Input over voltage	32V	
2	Battery thermistor sense (Cold / Hot)	0 / 45 °C	
3	Battery present detection	Yes / No	
4	Charge safety timer	560±10min	
5	Charge Over Current	$7.55 \pm 0.3A$	
6	Battery short	20A / 1us	
7	Battery over voltage	$13.0V \pm 0.1V$	
8	IC Thermal shutdown	145°C	

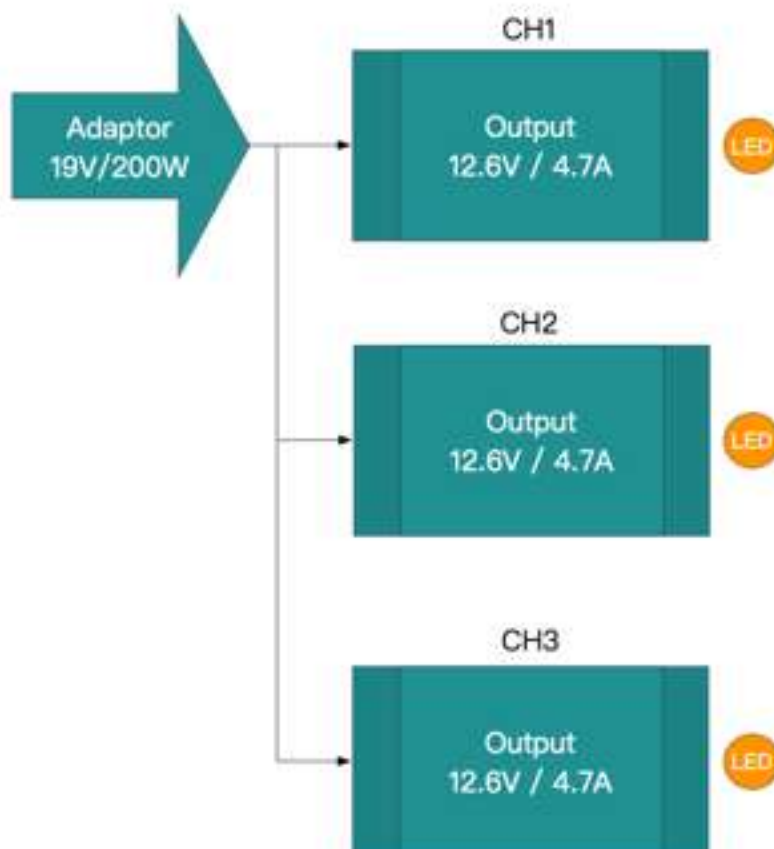
5.LED indicator Status

No.	Description	Color	Remark
1	Charging	Amber	
2	Charge Complete	Green	
3	Battery Fault	Flash Amber/Green	

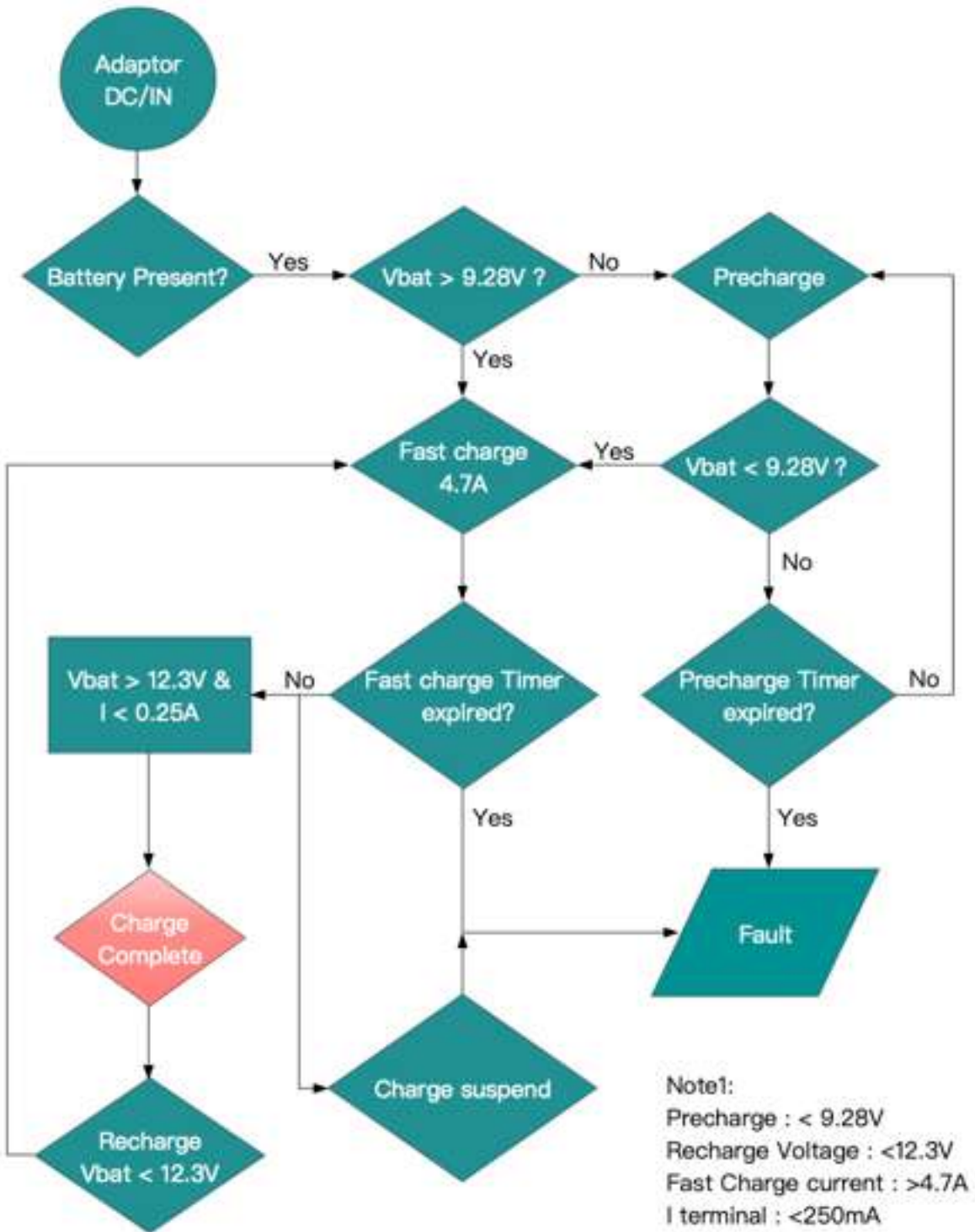
6.Pin define

Pin No.	Pin name	Description	Remark
1	BAT+	Postive	
2	SMBC	Battery SMBus Clock	
3	SMBD	Battery SMBus Data	
4	ID	Battery ID Detection	
5	BAT-	Negative	

7.Block



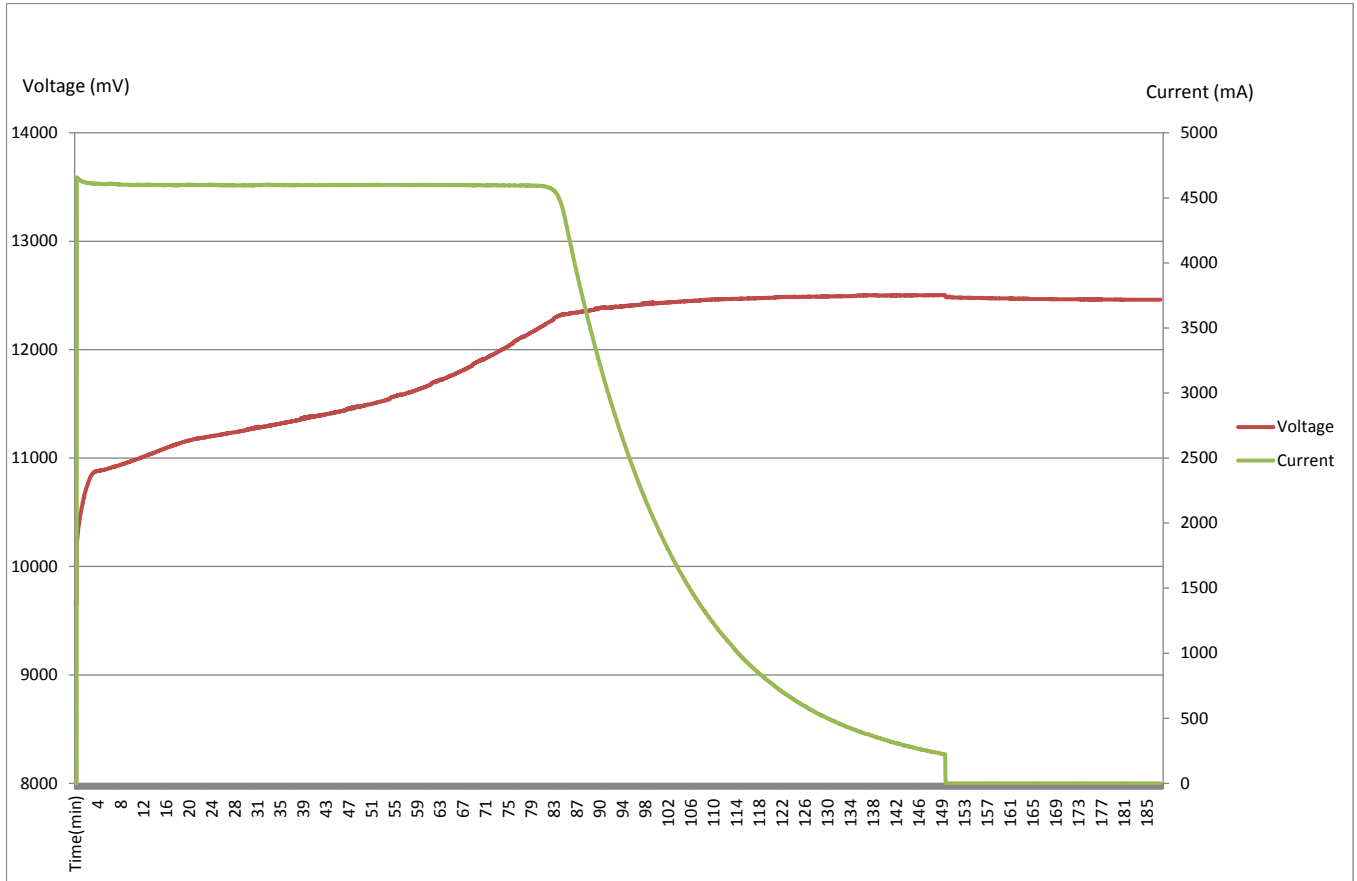
.Operation Flowchart



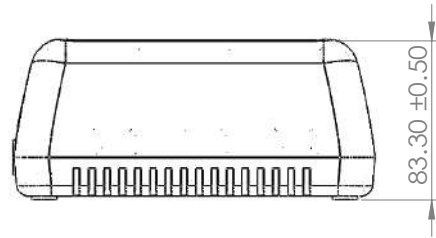
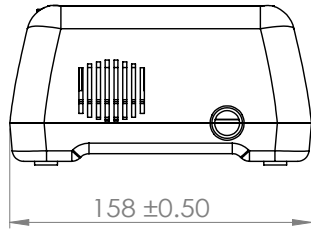
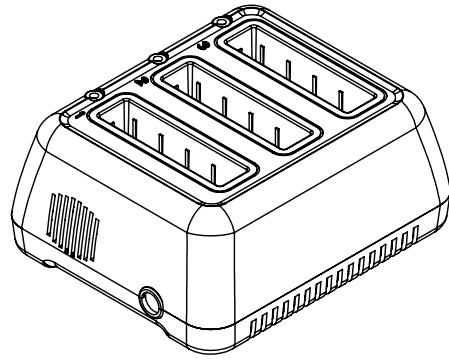
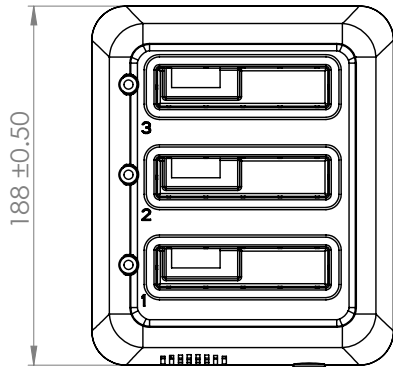
Note1:
 Precharge : < 9.28V
 Recharge Voltage : <12.3V
 Fast Charge current : >4.7A
 I terminal : <250mA

Note2: (Charge suspend)
 Adaptor remove
 Adaptor over voltage
 Adaptor over current
 IC Temperature over 145°C

9.Charge Cruves



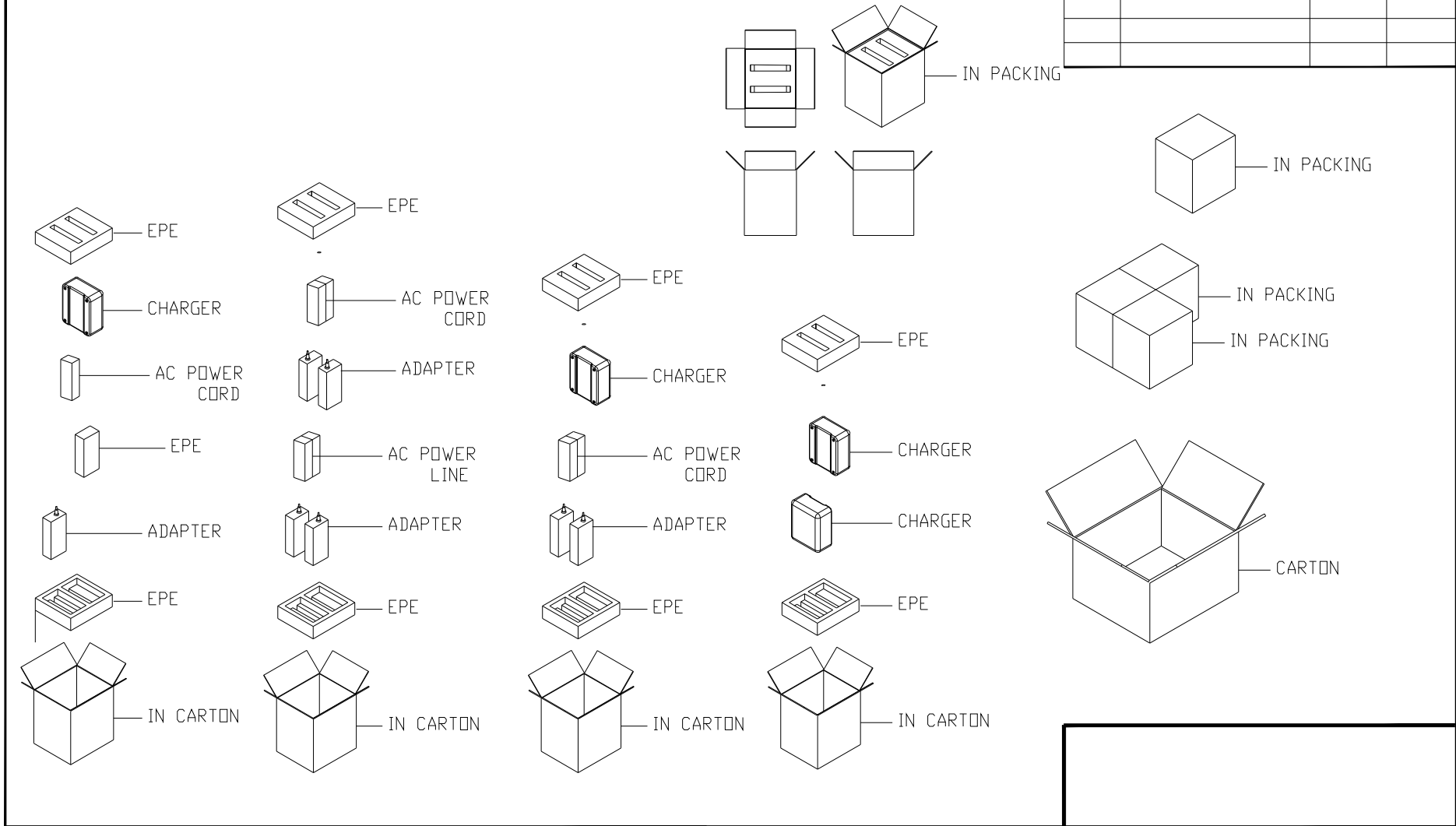
%'Ci hg]XY'8]a Ybg]cb



除非另有指定: 否則尺寸是以毫米為單位 表面加工: 公差: 線性: 角度:		加工處理:		去除毛邊 與銳角		不要縮放工程圖		修訂版	
繪製者	姓名	簽名	日期			標題: Outside Dimension			
檢查者						工程圖編號 JW202W2			
核准者						A4			
製程						圖頁 1 OF 1			
品管				材料:		比例:1:3			
				重量:					

11.Package Drawing

MARK 記號	REVISIONS 設置內容	SIGN 修改	DATE 日期



DIMENSIONAL TOLERANCES			
< 30	: ±0.25	DECIMALS	UP~100 : ±0.2
< 30~100	: ±0.35	X	100~150 : ±0.25
> 100~300	: ±0.5	X.X	150~200 : ±0.3
	: ±0.6	X.XX	200~250 : ±0.35
HOLES	: ±0.05	ANGLES: ±0.5°	250~300 : ±0.4
ABOVE 300			300~350 : ±0.45
			UP~600 : ±1.5
			600~900 : ±2.4
			900~OVER: ±3.1

核准	APPROVED	
審核	CHECKED	
設計	DESIGN	Winyi
製圖	DRAWN	Winyi
單位	MM	比例
UNIT		SCALE
		1:1

機型	MODEL	DR-202 CHARGER
材質	MATERIAL	
名稱	NAME	EXP DR-202 CHARGER PACKING
料號	P/N:	

12.Lable

